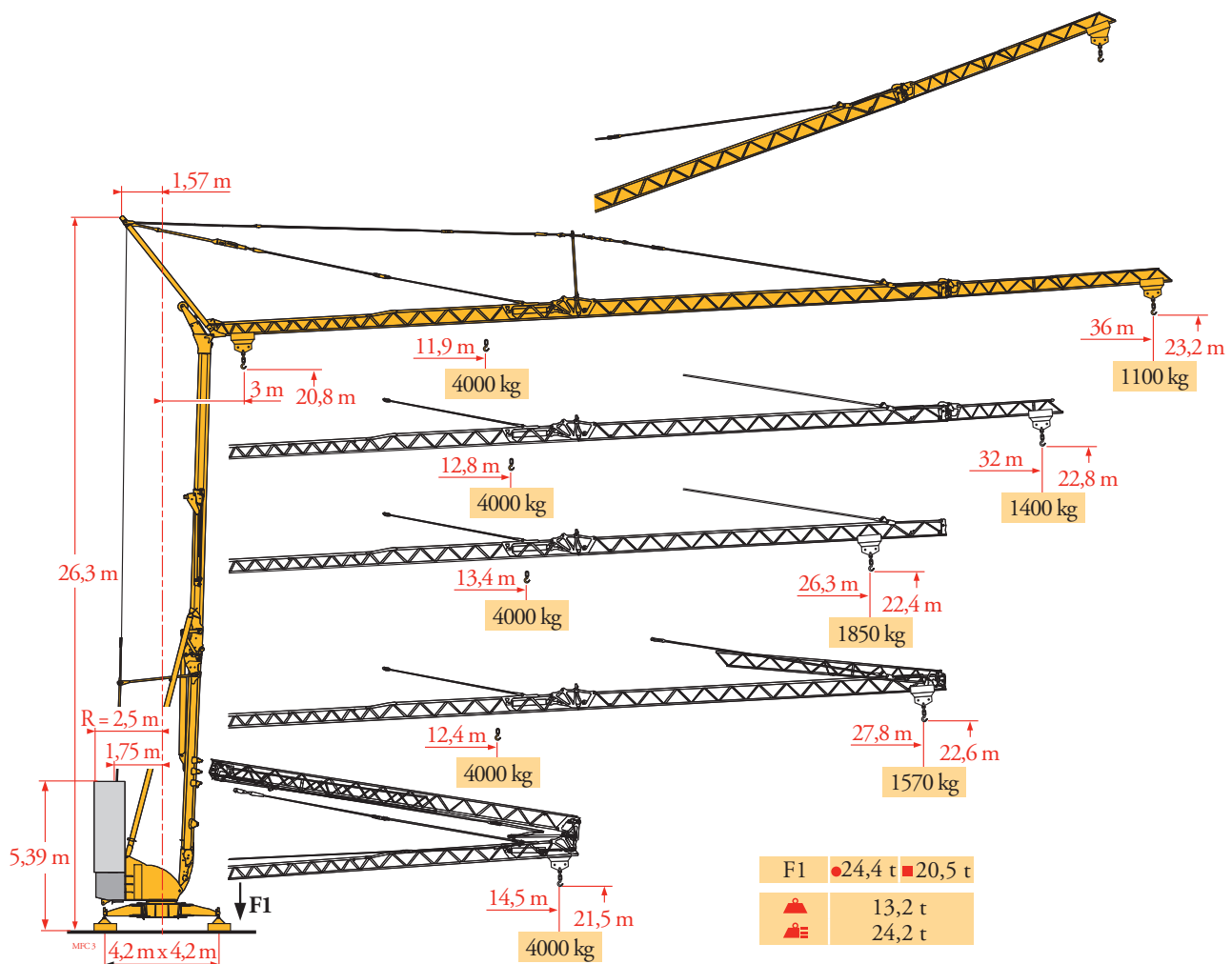


Potain Igo 42



Courbes de charges
Lastkurven
Load diagrams
Curvas de cargas
Curve di carico
Curva de cargas
Диаграммы грузоподъемностей

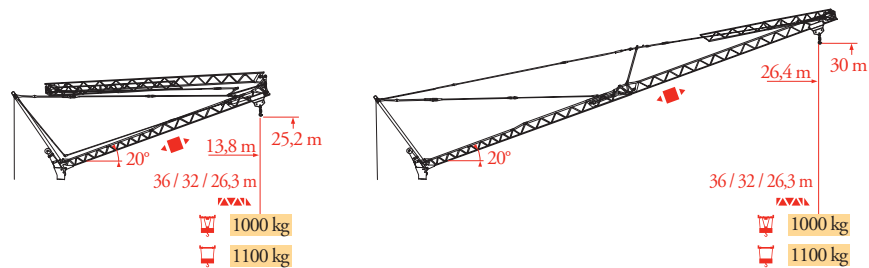
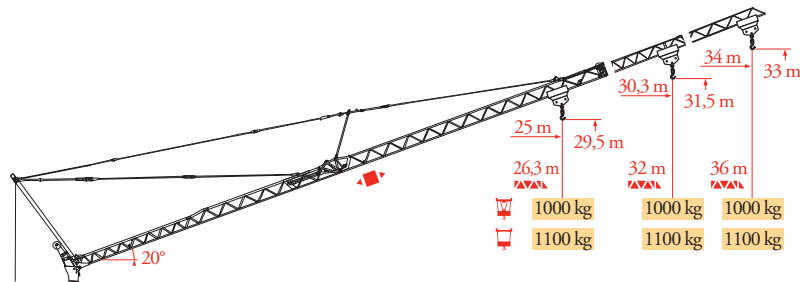
MFC3

36 m	3	11,9 12 14 16 18 20 20,8 21,8 22 24 26 28 30 32 34 36 m
		4000 3950 3255 2760 2385 2095 - - 1860 1670 1515 1380 1265 1165 1080 1000 kg
		2000 - 1860 1670 1515 1380 1265 1165 1080 1000 kg
32 m	3	12,8 14 16 18 20 22 22,6 23,6 24 26 28 30 32 m
		4000 3595 3050 2640 2320 2065 - - 1855 1685 1535 1410 1300 kg
		2000 - 1855 1685 1535 1410 1300 kg
26,3 m	3	13,4 14 16 18 20 22 23,6 24 24,6 26,3 m
		4000 3780 3210 2780 2445 2180 - 1930 - 1750 kg
		2000 1930 - 1750 kg

36 / 32 / 26,3 m	3	14,5 m	12,4 14 16 18 20 21,7 22 22,6 24 26 27,8 m
		4000 kg	4000 3425 2900 2510 2210 - 1965 - 1765 1600 1470 kg
		2000 kg	2000 1965 - 1765 1600 1470 kg
		2000 kg	2000 1850 1700 1570 kg

Flèche relevée
Ausleger in Steilstellung
Luffing jib
Flecha izada
Braccio impennato
Lança inclinada
Маховая стрела

MFC4



FR

Chariot distributeur
Réactions en service
Réactions hors service

A vide sans lest (ni train de transport) avec flèche et hauteur maximum.

Poids total du lest

DE

Verfahrbare Laufkatze
Reaktionskräfte in Betrieb
Reaktionskräfte außer Betrieb

Ohne Last, Ballast (und Transportachse), mit Maximalausleger und Maximalhöhe.

Ballast-Gesamtgewicht.

EN

Traversing trolley
Reactions in service
Reactions out of service

Without load, ballast (or transport axes), with maximum jib and maximum height.

Gross ballast weight.

ES

Carro distribuidor
Reacciones en servicio
Reacciones fuera de servicio

Sin carga, sin lastre, (ni tren de transporte), flecha y altura máxima.

Peso total del lastre.

IT

Carrellino distributore
Reazioni in servizio
Reazioni fuori servizio

A vuoto, senza zavorra (ne assali di trasporto) con braccio massimo e altezza massima.

Peso totale della zavorra.

PT

Carro distribuidor
Reacções em serviço
Reacções fora de serviço

Sem carga (nem trem de transporte)-sem lastro com lança e altura máximas.

Peso total do lastro.

RU

Грузовая тележка
Реакции при работе
Реакции в покое

Вес без груза, балласта (или транспортных осей), с максимальной длиной стрелы и максимальной высотой.
общий вес груза

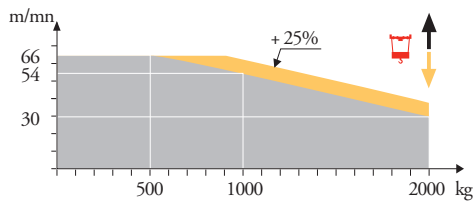
Mécanismes
Antriebe
Mechanisms
Mecanismos
Meccanismi
Mecanismos
Механизмы

MFC 3

			⚖					⚖					⚖					ch-PS	kW
⬆	15 LVF 10 Optima	m/min	3,6	18	30	49	66	3,6	18	30	54	66	1,8	8,9	15	27	33	15	11
		kg	2000	2000	2000	1100	500	2000	2000	2000	1000	500	4000	4000	4000	2000	1000		
➡	3 DVF 5	m/min	15 - 30 - 45 (0 → 1000 kg) - 15 - 30 - 41 (1000 → 4000 kg)														3	2,2	
⤵	RVF 41 Optima +	tr/min U/min - rpm	0 → 0,8														4	3	

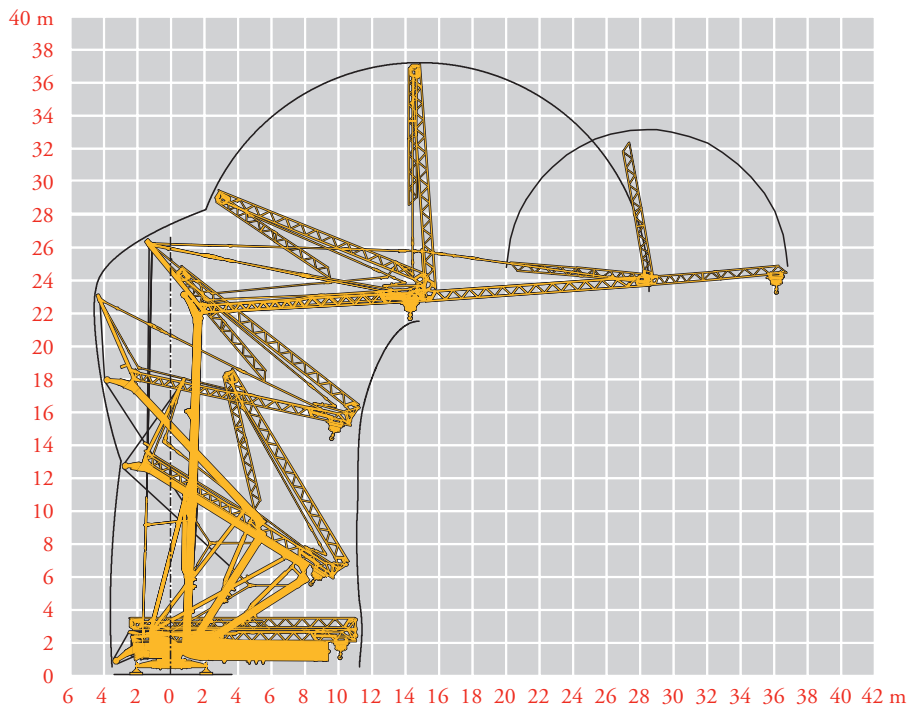
IEC 60204-32	kVA
400 V (+10% -10%) 50 Hz	15 LVF 10 : 22 kVA
480 V (+6% -10%) 60 Hz	15 LVF 10 : 22 kVA

15 LVF 10 Optima



Montage
Montage
Erection
Montaje
Montaggio
Montagem
Монтаж

MFC 3



FR
⬆
Levage
➡
Distribution
⤵
Orientation

DE
Heben
Katzfahren
Schwenken

EN
Hoisting
Trolleying
Slewing

ES
Elevación
Distribución
Orientación

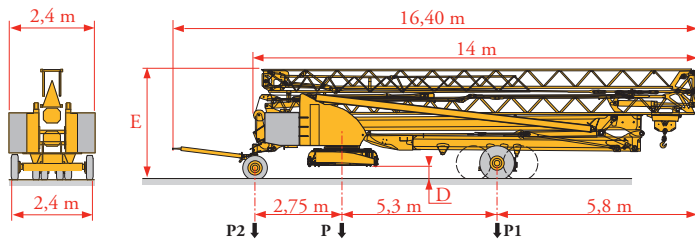
IT
Sollevamento
Distribuzione
Rotazione

PT
Elevação
Distribuição
Rotação

RU
Подъем
Перемещение каретки
Поворот

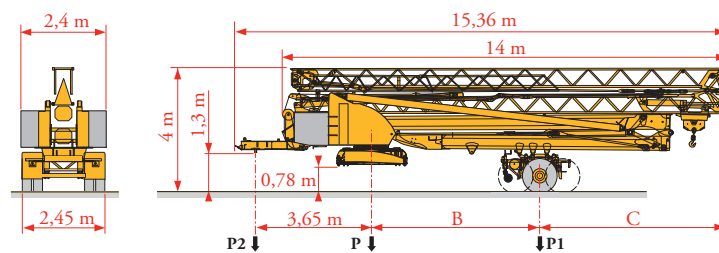
Transport
Transport
Transport
Transporte
Trasporto
Transporte
Транспортировка

MFC4



	Km/h	D (m)	E (m)	P (kg)	P1 (kg)	P2 (kg)
DJ100/S120	10	0,36/0,21	3,52/3,37	19280	10980	8300
DJ105/S125	25	0,36/0,21	3,52/3,37	19570	10650	8920

... **



	Km/h	B (m)	C (m)	P (kg)	P1 (kg)	P2 (kg)
SL121/J135	25	5,10	6,00	20190	12730	7460
SL122/J215M	80	5,00	6,17	21260	13910	7350

... **

FR

**

Voir documentations techniques.

DE

Siehe technische Dokumentation.

EN

See technical documentations.

ES

Consulte la documentación técnica.

IT

Vedere la documentazione tecnica.

PT

Consultar documentações técnicas.

RU

см. техническую документацию



Document commercial non contractuel. Pour toute information technique se référer à la notice correspondante.

Unverbindliches Vertriebsdokument. Für technische Informationen, siehe die entsprechenden Anweisungen.

This commercial document is not legally binding. For any technical information, please refer to the corresponding instructions.

Documento commercial no contractual. Para cualquier información técnica, ver la noticia correspondiente.

Documento commerciale non vincolante. per tutte le informazioni tecniche fare riferimento al catalogo istruzioni.

Documento comercial não contractual. Para qualquer informação técnica complementar consultar as respectivas instruções.

Этот коммерческий документ не является юридически обязательным. Для получения технической информации, см. соответствующие инструкции.

Manitowoc

Manitowoc - Americas - World Headquarters
2400 S. 44th Street • Manitowoc • WI 54220 USA
Tel: +1 920 684 4410 • Fax: +1 920 652 9778

Manitowoc - Europe, Middle East & Africa
Ecully, France
18, rue de Charbonnières B.P. 173 • 69132 ECULLY Cedex • FRANCE
Tel: +33 (0)4 72 18 20 20 • Fax: +33 (0)4 72 18 20 00

Manitowoc - Asia Pacific
16F Xu Hui Yuan Building,
1089 Zhongshan No.2 Road (S) • Shanghai 200030 China
Tel: +86 21 6457 0066 • Fax: +86 21 6457 4955

REF. 2008 03 MFC 4