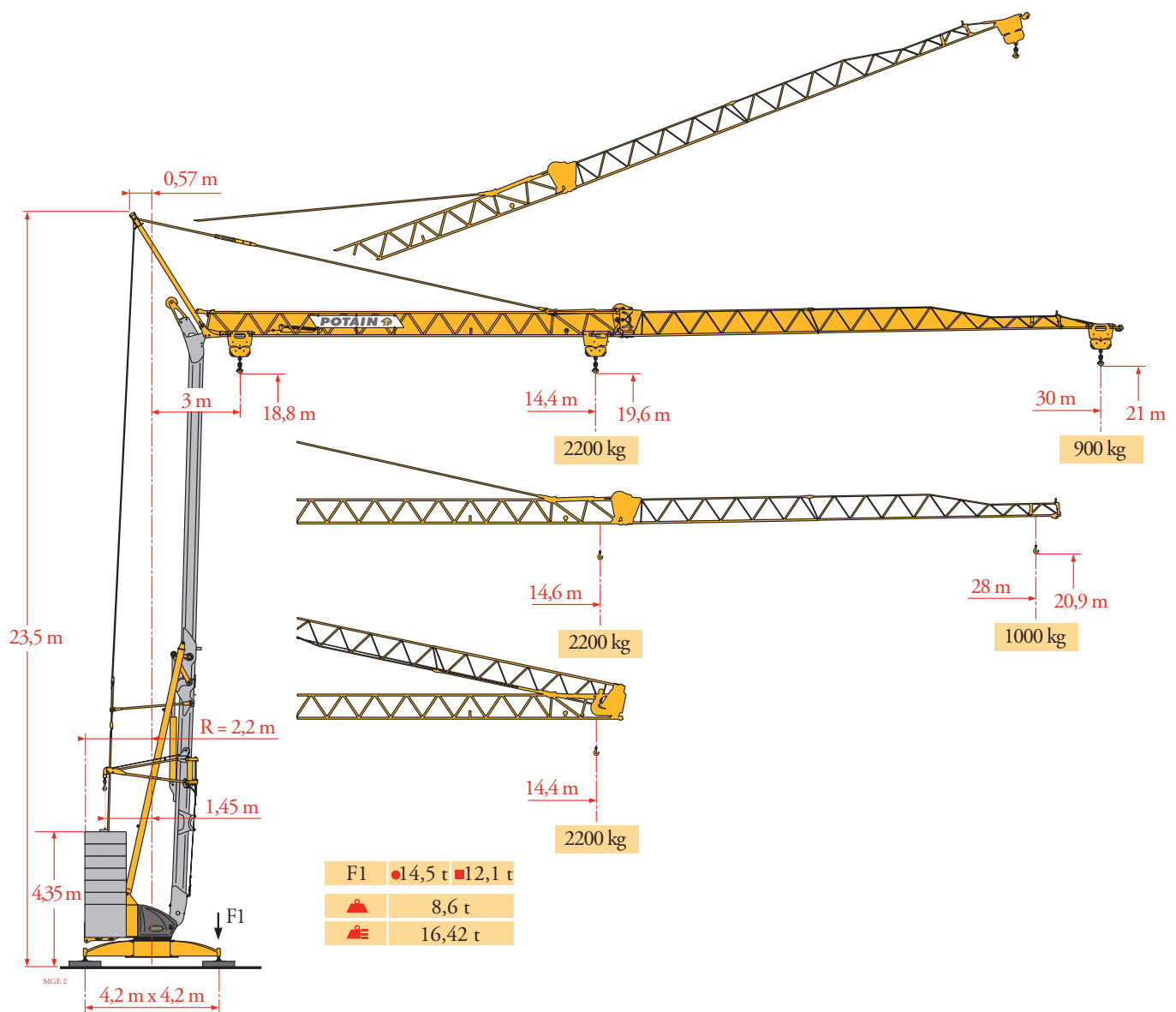


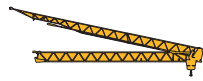
# Potain Igo 30



CE EN14439 C50 - C25  
FEM 1001 - A3

Courbes de charges  
 Lastkurven  
 Load diagrams  
 Curvas de cargas  
 Curve di carico  
 Curva de cargas  
 Диаграммы грузоподъемностей

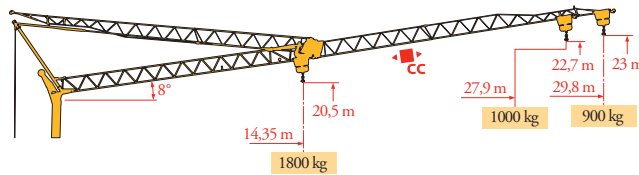
MGE.1



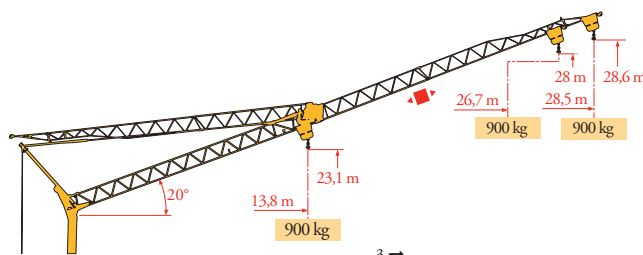
30 m ▲▲▲	3 → 14,4 m	3 → 14,4	15	16	17	18	19	20	21	22	23	24	25	26	27	28	29	30	m
	2200 kg	2200	2095	1935	1800	1680	1570	1480	1395	1315	1245	1185	1125	1075	1025	980	940	900	kg
28 m ▲▲▲	3 → 14,4 m	3 → 14,6	15	16	17	18	19	20	21	22	23	24	25	26	27	28	m		
	2200 kg	2200	2135	1975	1835	1710	1600	1505	1420	1340	1270	1205	1150	1095	1045	1000	kg		

Flèche relevée  
 Ausleger in Steilstellung  
 Luffing jib  
 Flecha izada  
 Braccio impennato  
 Lança inclinada  
 Маховая стрела

MGE.1



30 m ▲▲▲	3 → 16,9	17	18	19	20	21	22	23	24	25	26	27	28	29	29,8	m
	1800	1785	1665	1560	1465	1380	1305	1235	1175	1120	1065	1015	970	930	900	kg
28 m ▲▲▲	3 →	17,2	18	19	20	21	22	23	24	25	26	27	27,9	m		
	1800	1705	1595	1500	1415	1335	1265	1200	1145	1090	1040	1000	kg			



30 m ▲▲▲	3 →	28,5	m
28 m ▲▲▲	3 →	26,7	m
		900	kg
		900	kg



**FR**  
 Chariot distributeur  
 Chariot distributeur et courbes de charges  
 Réactions en service  
 Réactions hors service  
 A vide sans lest (ni train de transport) avec flèche et hauteur maximum  
 Poids total du lest

**DE**  
 Verfahrbare Laufkatze  
 Verfahrbare Laufkatze und Lastkurven  
 Reaktionskräfte in Betrieb  
 Reaktionskräfte außer Betrieb  
 Ohne Last, Ballast (und Transportachse), mit Maximalausleger und Maximalhöhe  
 Ballast-Gesamtgewicht

**EN**  
 Traversing trolley  
 Traversing trolley and load diagrams  
 Reactions in service  
 Reactions out of service  
 Without load, ballast (or transport axes), with maximum jib and maximum height  
 Gross ballast weight

**ES**  
 Carro distribuidor  
 Carro distribuidor y curvas de cargas  
 Reacciones en servicio  
 Reacciones fuera de servicio  
 Sin carga, sin lastre, (ni tren de transporte), flecha y altura máxima  
 Peso total del lastre

**IT**  
 Carrellino distributore  
 Carrellino distributore e curve di carico  
 Reazioni in servizio  
 Reazioni fuori servizio  
 A vuoto, senza zavorra (ne assali di trasporto) con braccio massimo e altezza massima  
 Peso totale della zavorra

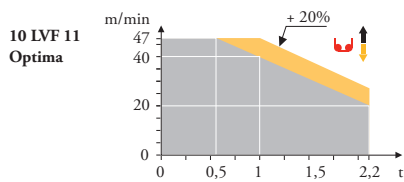
**PT**  
 Carro distribuidor  
 Carro distribuidor e curva de cargas  
 Reações em serviço  
 Reações fora de serviço  
 Sem carga (nem trem de transporte)- sem lastro com lança e altura máximas  
 Peso total do lastro

**RU**  
 Грузовая тележка  
 Грузовая тележка и диаграммы грузоподъемностей  
 Реакции при работе  
 Реакции в покое  
 Вес без груза, балласта (или транспортных осей), с максимальной длиной стрелы и максимальной высотой  
 общий вес груза

Mécanismes  
Antriebe  
Mechanisms  
Mecanismos  
Meccanismi  
Mecanismos  
Механизмы

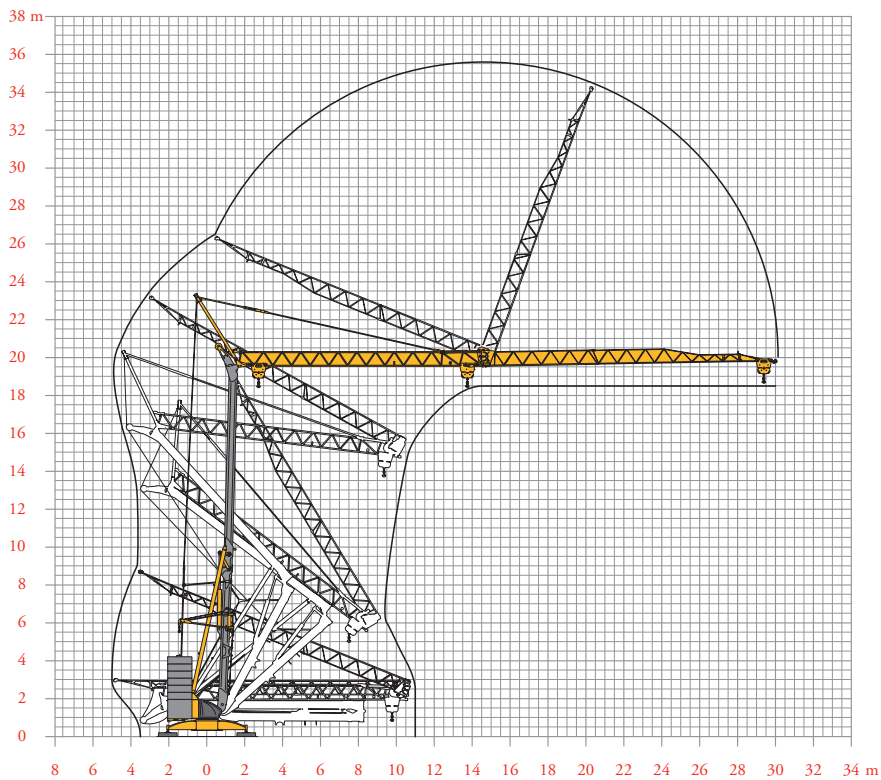
MGE 1

							ch - PS - hp	kW	
▲	10 LVF 11 Optima	m/min	3,5	12	20	40	47	10	7,5
		kg	2200	2200	2200	1000	600		
◀▶	2 DVF 4	m/min	15-30		15-30-40	15-30-47		2	1,5
		kg	900 → 2200		100 → 900	0 → 100			
●	RVF 31 Optima+	tr/min - U/min - rpm	0 → 0,8					2	1,5
		IEC 60204-32				kVA			
		400 V(+10% -10%) 50 Hz / 480 V(+ 6% -10%) 60 Hz				400 V/ 480 V : 14 kVA			



Montage  
Montage  
Erection  
Montaje  
Montaggio  
Montagem  
Монтаж

MGE 1



**FR**  
Levage  
Distribution  
Orientation

**DE**

Heben  
Katzfahren  
Schwenken

**EN**

Hoisting  
Trolleying  
Slewing

**ES**

Elevación  
Distribución  
Orientación

**IT**

Sollevarmento  
Distribuzione  
Rotazione

**PT**

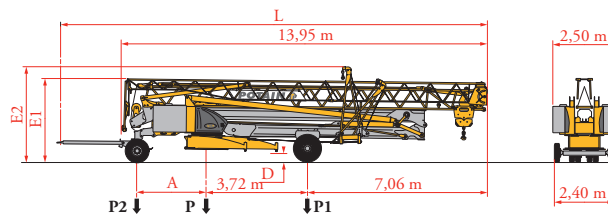
Elevação  
Distribuição  
Rotação

**RU**

Подъем  
Перемещение каретки  
Поворот

Transport  
 Transport  
 Transport  
 Transporte  
 Trasporto  
 Transporte  
 Транспортировка

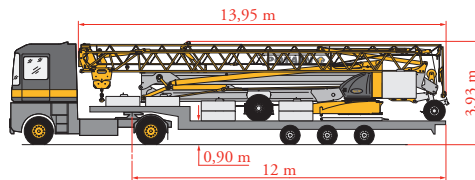
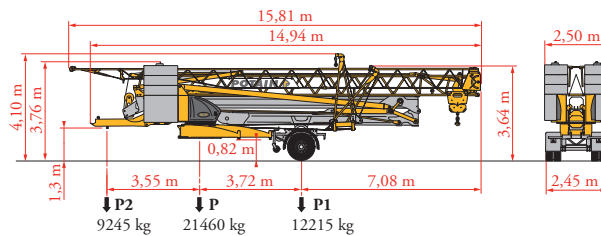
MGE 2



	Km/h	A (m)	D (m)	E1 (m)	E2 (m)	L (m)	P (kg)	P1 (kg)	P2 (kg)
DS62/S81	10	2,55	0,36/0,21	3,2/3,05	3,66/3,51	16,10	14070	8250	5820
DS61/S125	25	2,65	0,36/0,21	3,2/3,05	3,66/3,51	16,39	14785	8900	5885
... **									

SL121/J135

25



FR

\*\*

Voir documentations techniques.

DE

Siehe technische Dokumentation.

EN

See technical documentation.

ES

Consulte la documentación técnica.

IT

Vedere la documentazione tecnica.

PT

Consultar documentações técnicas.

RU

см. техническую документацию



\* Document commercial non contractuel. Pour toute information technique se référer à la notice correspondante.

\* Unverbindliches Vertriebsdokument. Für technische Informationen, siehe die entsprechenden Anweisungen.

\* This commercial document is not legally binding. For any technical information, please refer to the corresponding instructions.

\* Documento commercial no contractual. Para cualquier información técnica, ver la noticia correspondiente.

\* Documento commerciale non vincolante, per tutte le informazioni tecniche fare riferimento al catalogo istruzioni.

\* Documento comercial não contractual. Para qualquer informação técnica complementar consultar as respectivas instruções.

\* Этот коммерческий документ не является юридически обязательным. Для получения технической информации, см. соответствующие инструкции.



Igo 30

# Manitowoc

**Manitowoc - Americas - World Headquarters**  
 2400 S. 44th Street • Manitowoc • WI 54220 USA  
 Tel: +1 920 684 4410 • Fax: +1 920 652 9778

**Manitowoc - Europe, Middle East & Africa**  
 Ecully, France  
 18, rue de Charbonnières B.P. 173 • 69132 ECULLY Cedex • FRANCE  
 Tel: +33 (0)4 72 18 20 20 • Fax: +33 (0)4 72 18 20 00

**Manitowoc - Asia Pacific**  
 16F Xu Hui Yuan Building,  
 1089 Zhongshan No.2 Road (S) • Shanghai 200030 China  
 Tel: +86 21 6457 0066 • Fax: +86 21 6457 4955

REF: 2008 39 MGE 2