






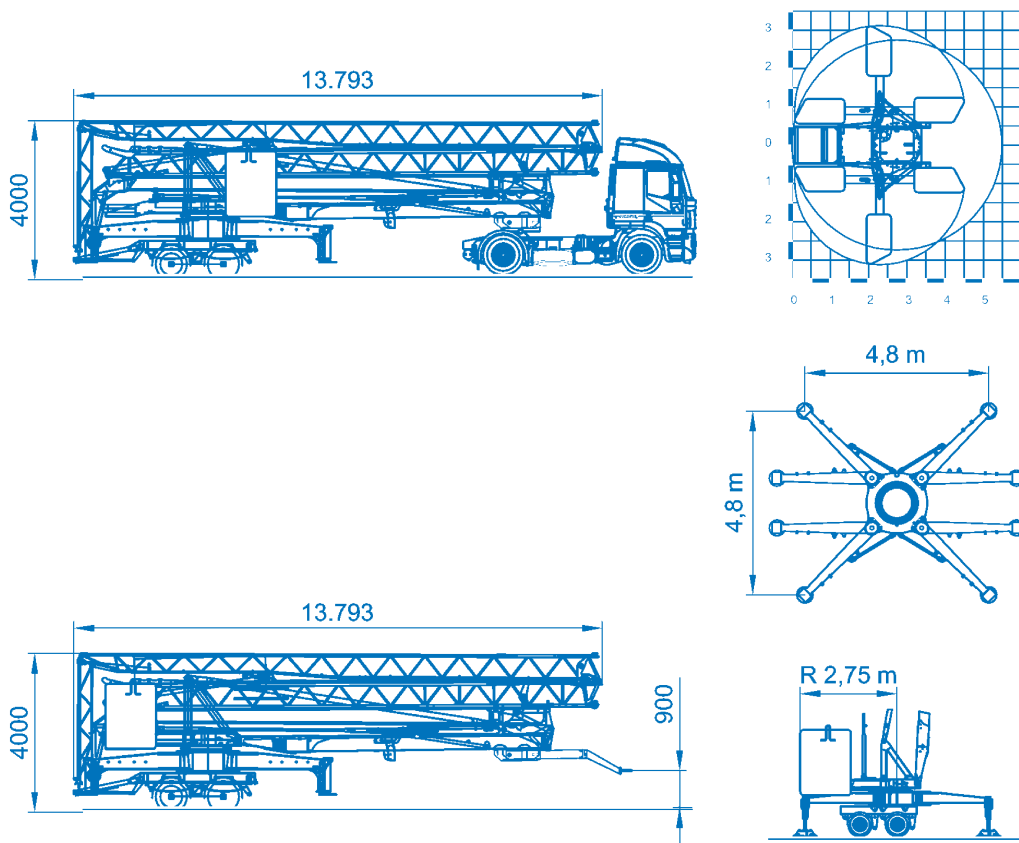


= ⋮		400V (±10%) 50 Hz		12kVA	
	m/l'	6	▶ 20	▶▶ 42	▶▶ 50
	kg	3000	3000	1200	800
kW		11 (Inverter)			
	m/l'	17.8	▶ 28.6	▶▶ 53.5 ($\swarrow 39.3$)	
	kW	3 (Inverter)			
	n/l'	0.17	▶ 0.42	▶▶ 0.85	
	kW	3,7 (Inverter)			
	min	▶ 18			
	kW	2.2			
	25 - 80 km/h		22.600 kg		2 x 4200 kg + 1715 kg



Alle Abmessungen und technischen Daten sind unverbindlich.

EUROGRU[®]
BAUKRANE SEIT 1962

Am Dornbusch 10
64390 Erzhausen
www.eurogru.de

Telefon: +49 (0) 6150 13440
Fax: +49 (0) 6150 7002
Email: gralki@eurogru.de