

ARCOMET

www.arcomet.com



LASTENTABEL - COURBES DE CHARGES - LOAD CURVES - LASTKURVEN - CURVE DI CARICO - CURVAS DE CARGAS

m	2,20 - 14,20	16	19	22	25	28	31	33	36	38	42
kg	4000	3480	2850	2390	2060	1800	1590	1480	1330	1250	1100
ft	7'3" - 46'7"	52'6"	62'4"	72'2"	82'0"	91'10"	101'8"	108'3"	118'1"	124'8"	137'10"
lbs	8820	7670	6280	5270	4540	3970	3510	3260	2930	2760	2430

m	2,20 - 14,70	16	19	22	25	28	31	33	36	38
kg	4000	3620	2960	2490	2140	1880	1660	1540	1390	1300
ft	7'3" - 48'3"	52'6"	62'4"	72'2"	82'0"	91'10"	101'8"	108'3"	118'1"	124'8"
lbs	8820	7980	6530	5490	4720	4150	3660	3400	3060	2870

m	2,20 - 15,50	16	19	22	25	28	31	33
kg	4000	3860	3150	2660	2290	2000	1780	1650
ft	7'3" - 50'10"	52'6"	62'4"	72'2"	82'0"	91'10"	101'8"	108'3"
lbs	8820	8510	6940	5860	5050	4410	3920	3640



m	2,20 - 25	28	31	33	36	38	42
kg	2000	1800	1590	1480	1330	1250	1100
ft	7'3" - 82'0"	91'10"	101'8"	108'3"	118'1"	124'8"	137'10"
lbs	4410	3970	3510	3260	2930	2760	2430



m	2,20 - 27,31	28	31	33	36	38	42
kg	2000	1942	1724	1601	1444	1354	1200
ft	7'3" - 89'7"	91'10"	101'8"	108'3"	118'1"	124'8"	137'10"
lbs	4410	4280	3800	3530	3180	2990	2650

HOEKDRUKKEN - RÉACTIONS - REACTIONS - ECKDRÜCKE - REAZIONI - REACCIONES



m	42	230	kN
ft	137'10"	52	kips
	38	226	
	124'8"	51	
	33	224	
	108'3"	50	



m	42	180	kN
ft	137'10"	40	kips
	38	175	
	124'8"	39	
	33	166	
	108'3"	37	

GEWICHT ZONDER BALLAST - POIDS PROPRE SANS LEST - WEIGHT WITHOUT BALLAST - GEWICHT OHNE BALLAST - PESO SENZA ZAVORRA

kg	15 500
lbs	34 170

AANDRIJVINGEN - MÉCHANISMES - MECHANISMS - ANTRIEBE - MECCANISMI - MECANISMOS



max. 2000 kg

	m/min	6,0	25,0	50,0
	kg	2000	2000	1250
	fpm	20	82	164
	lbs	4410	4410	2760
	kW	2,4	11,0	11,0
	HP	~3,2	~14,7	~14,7



max. 4000 kg

	m/min	3,0	12,5	25,0
	kg	4000	4000	2500
	fpm	10	41	82
	lbs	8820	8820	5510
	kW	2,4	11,0	11,0
	HP	~3,2	~14,7	~14,7

	m/min	28 / 57	2,4 kW
	fpm	~92 / 187	~3,2 HP

	m/min	28 / 57	2,4 kW
	fpm	~92 / 187	~3,2 HP

	tr/min	0 - 0,8	3 kW
			~4 HP

	tr/min	0 - 0,8	3 kW
			~4 HP

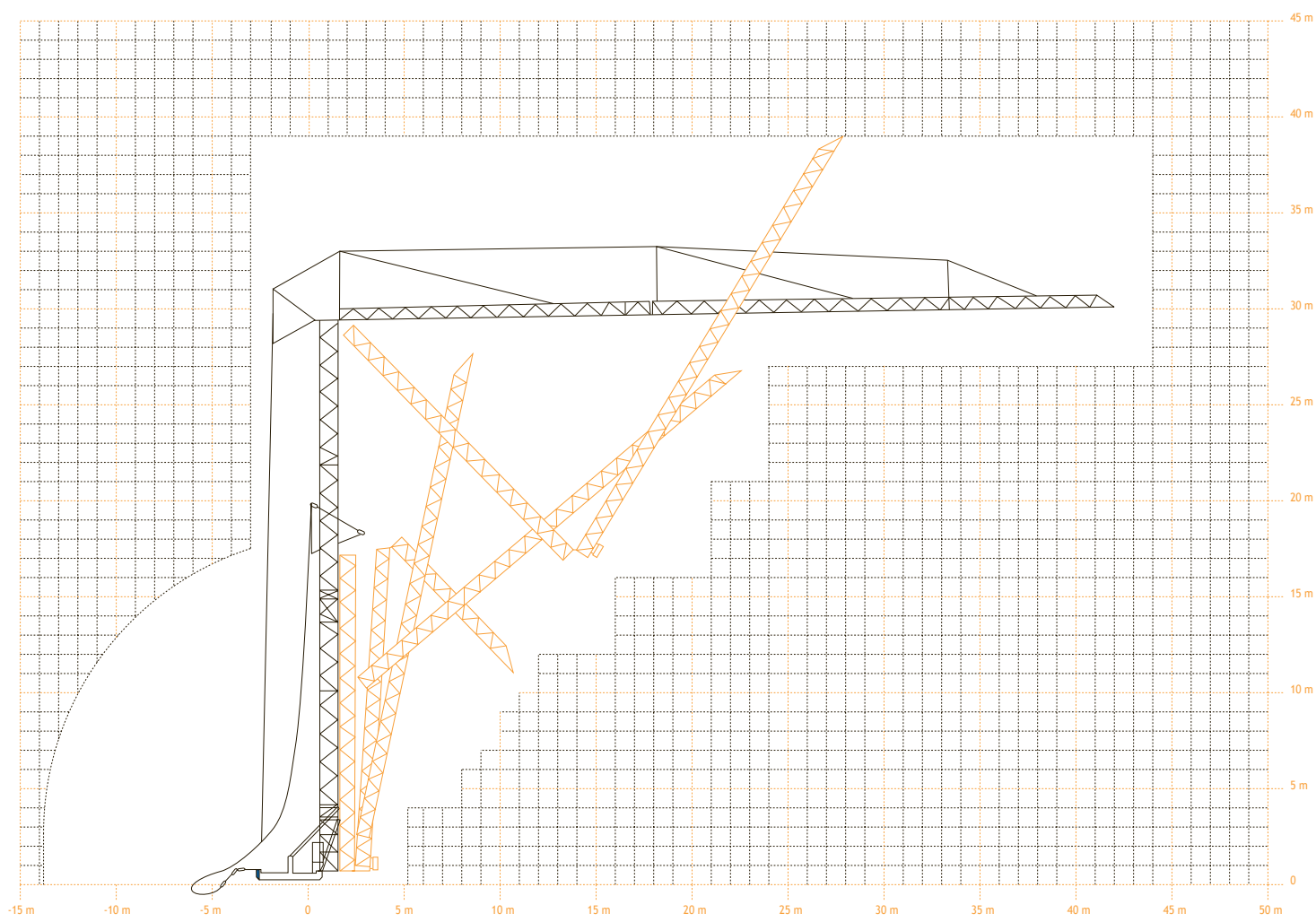
	m/min	25	2 x 1,5 kW
	fpm	82	~2 x 2 HP

	m/min	25	2 x 1,5 kW
	fpm	82	~2 x 2 HP

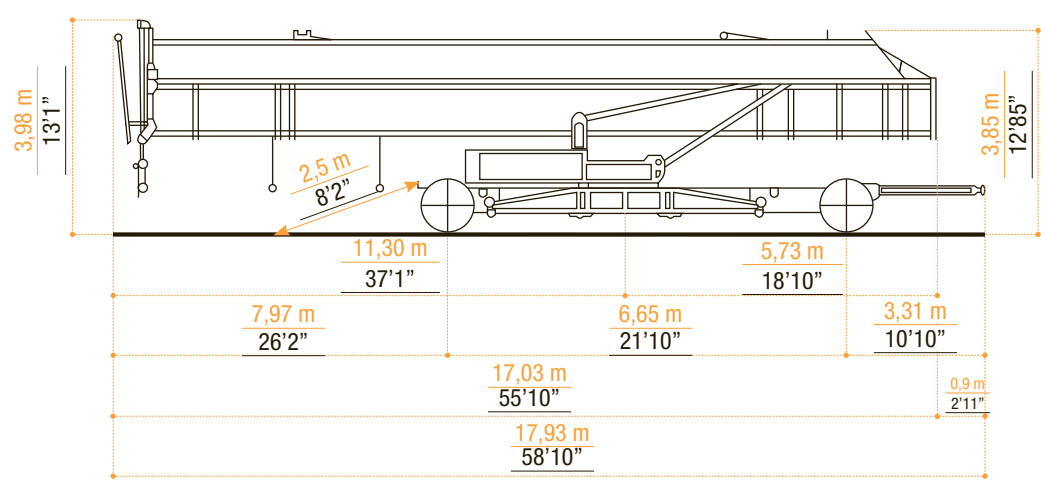
	20
--	----


















	380 V - 50 Hz
--	---------------

VEREISTE MONTAGERUIMTE - ENCOMBREMENT AU MONTAGE - SPACE REQUIREMENT - ABMESSUNGEN - SPAZIO NECESSARIO PER IL MONTAGGIO



TRANSPORT



 <ul style="list-style-type: none"> • in bedrijf • en service • in service • in Betrieb • in servizio • en servicio 	 <ul style="list-style-type: none"> • buiten bedrijf • hors service • out of service • außer Betrieb • fuori servizio • fuera de servicio 	 <ul style="list-style-type: none"> • hijsen • levage • hoisting • heben • sollevamento • elevación 	 <ul style="list-style-type: none"> • loopkatriden • chariotage • jib trolleying • Katzfahren • traslazione carrello • poleas móviles 	 <ul style="list-style-type: none"> • zwenken • orientation • slewing • Schwenken • rotazione • orientación 	 <ul style="list-style-type: none"> • spanning • tension • voltage • spannung • tensione • tensión 	 <ul style="list-style-type: none"> • gewicht zonder ballast • poids propre sans lest • weight without ballast • gewicht ohne Ballast • peso senza zavorra • peso sin lastre
 <ul style="list-style-type: none"> • lengte • longueur • length • länge • lunghezza • longitud 	 <ul style="list-style-type: none"> • spoor • translation • rail • Kranfahren • carreggiata • rail 	 <ul style="list-style-type: none"> • vermogen • puissance • power • leistung • potenza • potencia 	 <ul style="list-style-type: none"> • micro snelheid • vitesse • speed • Geschwindigkeit • velocità • velocidad 	 <ul style="list-style-type: none"> • 2^e snelheid • 2^e vitesse • 2^e speed • 2^e Geschwindigkeit • 2^a velocità • 2^a velocidad 	 <ul style="list-style-type: none"> • 3^e snelheid • 3^e vitesse • 3^e speed • 3^e Geschwindigkeit • 3^a velocità • 3^a velocidad 	 <ul style="list-style-type: none"> • maximale hoekdruk • réactions • reactions • Eckdrücke : 10 kN = 1t • press. angolare massima • presión angular máxima
 <ul style="list-style-type: none"> • enkel inschering zonder hijsblok • simple mouflage sans moufle • 2 fall reeving without houstingblock • 2 Fach Einsicherung ohne Hakenflasche • passaggio semplice senza paranca • solamente elevación sin polea 	 <ul style="list-style-type: none"> • enkel inschering met hijsblok • simple mouflage avec moufle • 2 fall reeving with houstingblock • 2 Fach Einsicherung mit Hakenflasche • passaggio semplice con paranca • solamente elevación con polea 	 <ul style="list-style-type: none"> • dubbel inschering • double mouflage • 4 fall reeving • 4 Fach Einsicherung • passaggio doppio • elevación doble 				

Konform richtlijn 2000/14/EG betreffende geluidsemissie van materieel voor gebruik buitenshuis en wijzigingen. - également conforme aux dispositions de la directive "émission sonores des équipements utilisés à l'extérieur des bâtiments" 2000/14/CE et aux législations la transposant. - Requirements of directive 2000/14/CE "noise emission in the environment by equipment for use outdoors, as amended. - Bestimmung der Richtlinie "Lärmübertragung des ausserhalb der Gebäude benutzten Ausrüstungen" 2000/14/EG und den gesetzlichen Vorschriften.



ARCOMET

Industrieweg 139 - 3583 Paal-Beringen - BELGIUM - T +32 (0)11 450 950 - EMAIL arcomet@arcomet.com - www.arcomet.com