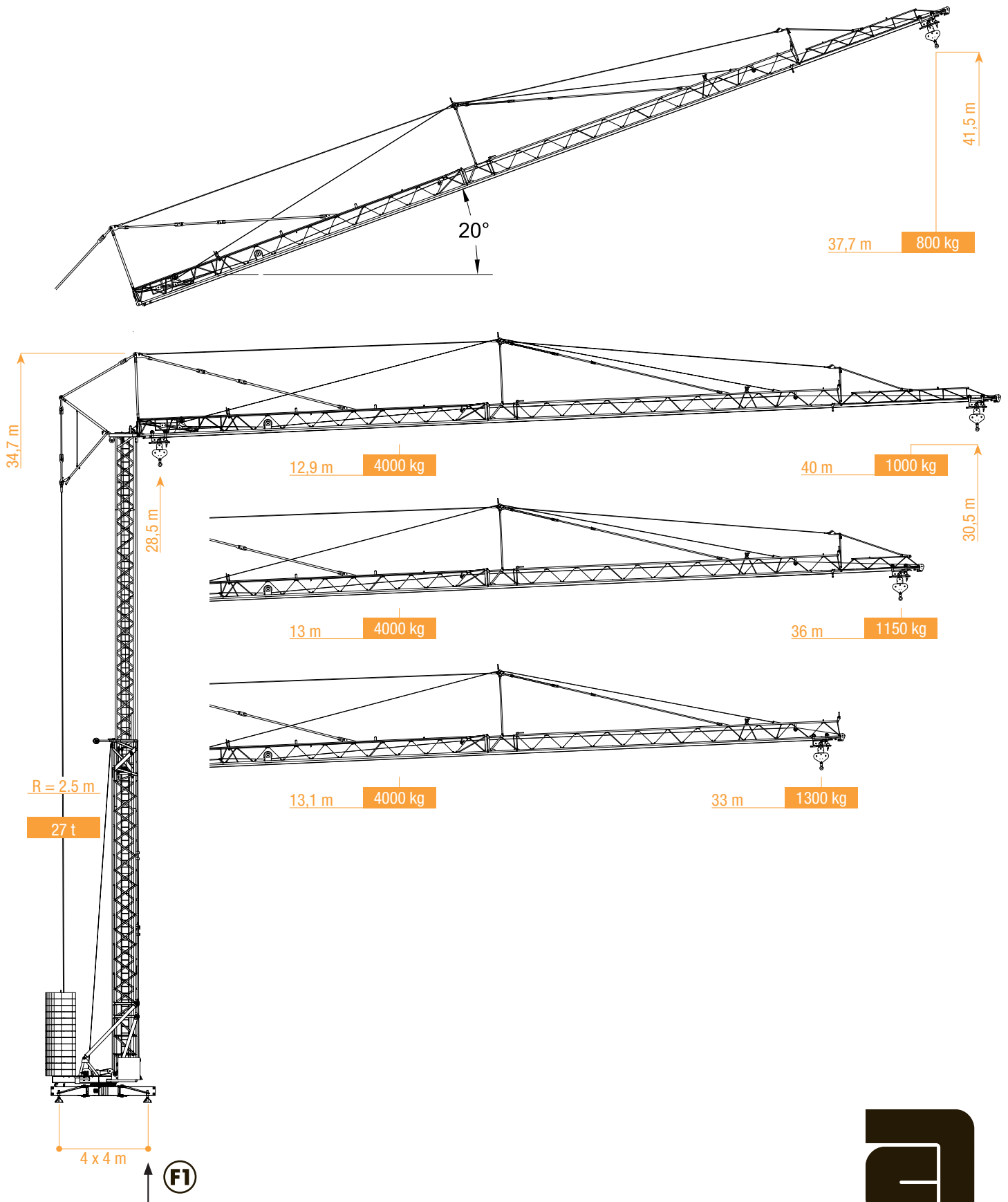


Snelmontagekraan  
 Grue à montage rapide  
 Schnelleinsatzkran  
 Self erecting crane

# A 40 Eco city



**ARCOMET**

www.arcomet.com

LASTENTABEL - COURBES DE CHARGES - LOAD CURVES - LASTKURVEN - CURVE DI CARICO - CURVAS DE CARGAS



m	2,20 - 12,9	16	19	22	25	28	31	33	36	38	40
kg	4000	3090	2510	2100	1800	1570	1380	1280	1140	1070	1000

m	2,20 - 13	16	19	22	25	28	31	33	36
kg	4000	3100	2520	2120	1810	1575	1390	1280	1150

m	2,20 - 13,1	16	19	22	25	28	31	33
kg	4000	3130	2550	2140	1830	1600	1410	1300



m	2,20 - 23,5	28	31	33	36	38	40
kg	2000	1620	1440	1330	1200	1120	1050

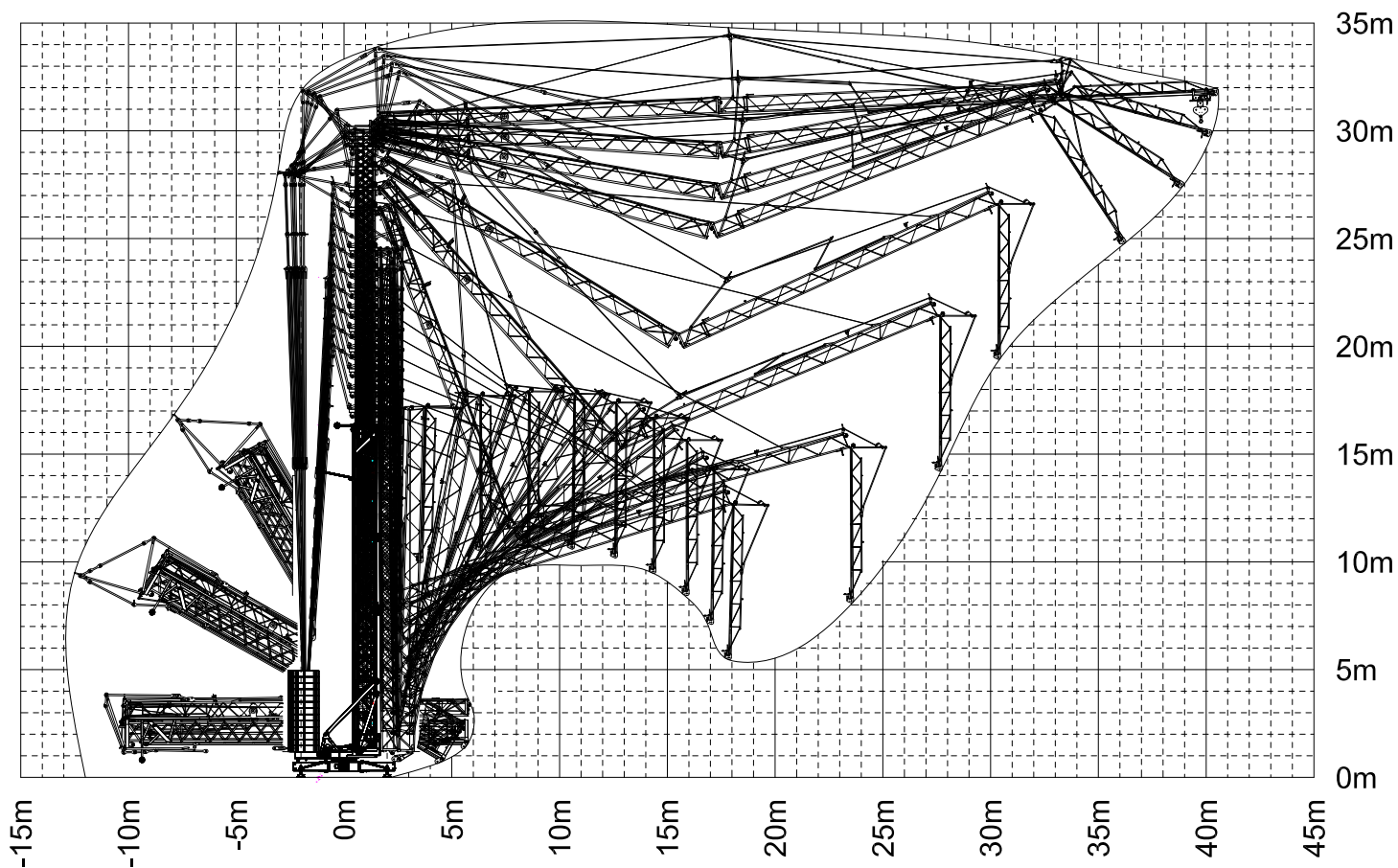
HOEKDRUKKEN - RÉACTIONS - REACTIONS - ECKDRÜCKE - REAZIONI - REACCIONES

	m			kN		m			kN		kg	12 250
		40	210				40	180				
		36	204				36	173				
		33	192				33	161				

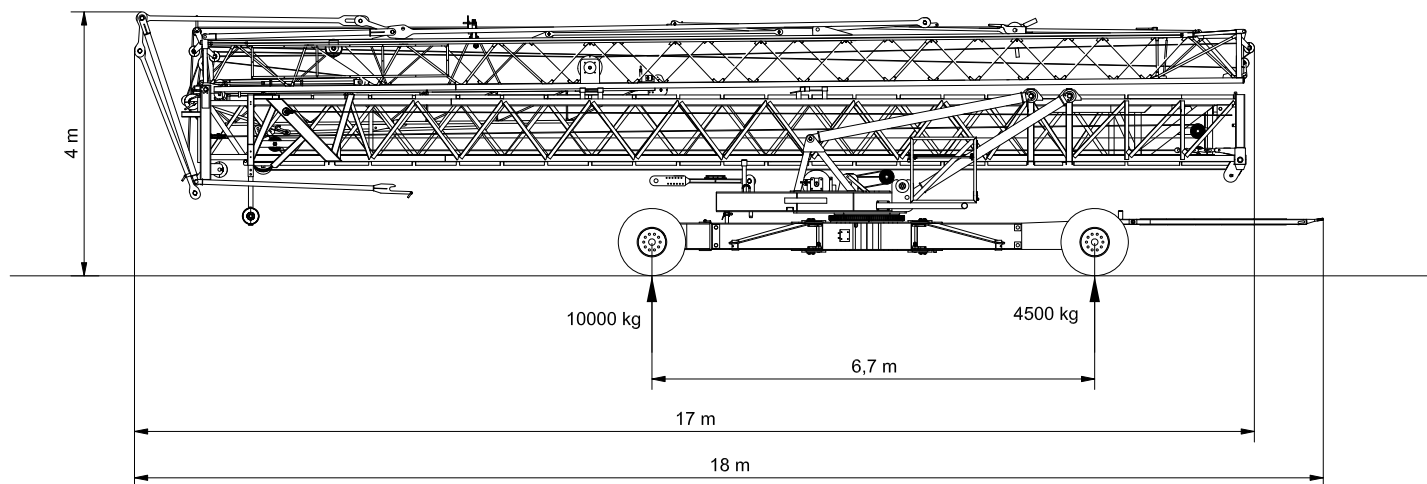
AANDRIJVINGEN - MÉCHANISMES - MECHANISMS - ANTRIEBE - MECCANISMI - MECANISMOS



















	m/min	max. 2000 kg				max. 4000 kg					
		0 → 24	0 → 30	0 → 46	0 → 54	0 → 11	0 → 13	0 → 22	0 → 27		
		kg	2000	1500	1000	750	4000	3000	2000	1500	
	kW	11	11	11	11	11	11	11			
	m/min	0 → 60		3 kW		0 → 60		3 kW			
	tr/min	0 - 0,8		3 kW		0 - 0,8		3 kW			
	max	20 kVA									
		400V / 50Hz / 32A									
		35 kVA									

VEREISTE MONTAGERUIMTE - ENCOMBREMENT AU MONTAGE - SPACE REQUIREMENT - ABMESSUNGEN - SPAZIO NECESSARIO PER IL MONTAGGIO



TRANSPORT



 <ul style="list-style-type: none"> <li>•in bedrijf</li> <li>•en service</li> <li>•in service</li> <li>•in Betrieb</li> <li>•in servizio</li> <li>•en servicio</li> </ul>	 <ul style="list-style-type: none"> <li>•buiten bedrijf</li> <li>•hors service</li> <li>•out of service</li> <li>•außer Betrieb</li> <li>•fuori servizio</li> <li>•fuera de servicio</li> </ul>	 <ul style="list-style-type: none"> <li>•hijsen</li> <li>•levage</li> <li>•hoisting</li> <li>•heben</li> <li>•sollevamento</li> <li>•elevación</li> </ul>	 <ul style="list-style-type: none"> <li>•loopkatrijden</li> <li>•chariotage</li> <li>•jib trolleying</li> <li>•Katzfahren</li> <li>•traslazione carrello</li> <li>•poleas móviles</li> </ul>	 <ul style="list-style-type: none"> <li>•zwenken</li> <li>•orientation</li> <li>•slewing</li> <li>•Schwenken</li> <li>•rotazione</li> <li>•orientación</li> </ul>	 <ul style="list-style-type: none"> <li>•spanning</li> <li>•tension</li> <li>•voltage</li> <li>•spannung</li> <li>•tensione</li> <li>•tensión</li> </ul>	 <ul style="list-style-type: none"> <li>•gewicht zonder ballast</li> <li>•poids propre sans lest</li> <li>•weight without ballast</li> <li>•gewicht ohne Ballast</li> <li>•peso senza zavorra</li> <li>•peso sin lastre</li> </ul>
 <ul style="list-style-type: none"> <li>•lengte</li> <li>•longueur</li> <li>•length</li> <li>•länge</li> <li>•lunghezza</li> <li>•longitud</li> </ul>	 <ul style="list-style-type: none"> <li>•spoor</li> <li>•translation</li> <li>•rail</li> <li>•Kranfahren</li> <li>•carreggiata</li> <li>•rail</li> </ul>	 <ul style="list-style-type: none"> <li>•vermogen</li> <li>•puissance</li> <li>•power</li> <li>•leistung</li> <li>•potenza</li> <li>•potencia</li> </ul>	 <ul style="list-style-type: none"> <li>•micro snelheid</li> <li>•vitesse</li> <li>•speed</li> <li>•Geschwindigkeit</li> <li>•velocità</li> <li>•velocidad</li> </ul>	 <ul style="list-style-type: none"> <li>•2<sup>o</sup> snelheid</li> <li>•2<sup>e</sup> vitesse</li> <li>•2<sup>o</sup> speed</li> <li>•2<sup>o</sup> Geschwindigkeit</li> <li>•2<sup>a</sup> velocità</li> <li>•2<sup>o</sup> velocidad</li> </ul>	 <ul style="list-style-type: none"> <li>•3<sup>o</sup> snelheid</li> <li>•3<sup>e</sup> vitesse</li> <li>•3<sup>o</sup> speed</li> <li>•3<sup>o</sup> Geschwindigkeit</li> <li>•3<sup>a</sup> velocità</li> <li>•3<sup>o</sup> velocidad</li> </ul>	 <ul style="list-style-type: none"> <li>•maximale hoekdruk</li> <li>•réactions</li> <li>•reactions</li> <li>•Eckdrücke : 10 kN = 1t</li> <li>•press. angolare massima</li> <li>•presión angular máxima</li> </ul>
 <ul style="list-style-type: none"> <li>•enkel inschering zonder hijsblok</li> <li>•simple mouflage sans moufle</li> <li>•2 fall reeving without houstingblock</li> <li>•2 Fach Einscherung ohne Hakenflasche</li> <li>•passaggio semplice senza paranca</li> <li>•solamente elevación sin polea</li> </ul>	 <ul style="list-style-type: none"> <li>•enkel inschering met hijsblok</li> <li>•simple mouflage avec moufle</li> <li>•2 fall reeving with houstingblock</li> <li>•2 Fach Einscherung mit Hakenflasche</li> <li>•passaggio semplice con paranca</li> <li>•solamente elevación con polea</li> </ul>	 <ul style="list-style-type: none"> <li>•dubbel inschering</li> <li>•double mouflage</li> <li>•4 fall reeving</li> <li>•4 Fach Einscherung</li> <li>•passaggio doppio</li> <li>•elevación doble</li> </ul>	 <ul style="list-style-type: none"> <li>•minimum generator vermogen</li> <li>•minimum puissance generateur</li> <li>•minimum generator power</li> <li>•minimum leistung generator</li> <li>•minimo potenza generatore</li> </ul>			

Konform richtlijn 2000/14/EG betreffende geluidsemissie van materieel voor gebruik buitenshuis en wijzigingen. - également conforme aux dispositions de la directive "émission sonores des équipements utilisés à l'extérieur des bâtiments" 2000/14/CE et aux législations la transposant. - Requirements of directive 2000/14/CE "noise emission in the environment by equipment for use outdoors, as amended. - Bestimmung der Richtlinie "Lärmübertragung des ausserhalb der Gebäude benutzten Ausrüstungen" 2000/14/EG und den gesetzlichen Vorschriften.



**ARCOMET**

Industrieweg 139 - 3583 Paal-Beringen - BELGIUM - T +32 (0)11 450 950 - EMAIL [arcomet@arcomet.com](mailto:arcomet@arcomet.com) - [www.arcomet.com](http://www.arcomet.com)